

An introduction to Baitmet package

Version 1.0.0

Xavier Domingo-Almenara (Maintainer)

xavier.domingo@urv.cat

January 13, 2017

This vignette presents **Baitmet**, an R package for library driven compound profiling in full scan GC–MS. Baitmet allows an automated quantification of metabolites by targeting a mass spectral library into the chromatograms. **Baitmet** outputs a table with compound names, spectral matching score, general across-samples RI error, and the area of the compound for each sample. Baitmet is compatible with the use of internal standards, but it is also capable of automatically determine which is the compounds retention index without co-injecting internal standards. If you use the package **Baitmet** in your analysis and publications please cite:

Domingo-Almenara X, Brezmes J, Venturini G, Vivo-Truyols G, Perera A, Vinaixa M. Baitmet, a computational approach for GC–MS library-driven metabolite profiling. (2017) *Submitted*

This study is also referred for a more technical and detailed explanation about the **Baitmet** methods.

Installation: **Baitmet** can be installed from any **CRAN** repository, by:

```
# Install
install.packages("baitmet")
# Load
library(baitmet)
```

Support: Any enquiries, bug reports or suggestions are welcome and they should be addressed to xavier.domingo@urv.cat.

Contents

1	Introduction	3
2	Importing and customizing mass spectral libraries: using the Golm Metabolome Database	3
3	GC–MS Data Processing with Baitmet: a tutorial	4
3.1	Compound profiling: data processing	5
3.1.1	Setting up the experiment files	5
3.1.2	Data processing	6
3.2	Computing retention indexes	7
3.2.1	Withouth using internal standards	7
3.2.2	Using internal standards	8
3.3	Validating results: using selective masses for compound quantification	9
4	Results and visualization	9

1 Introduction

Baitmet is an R package that allows a high-throughput search of an entire mass spectral (MS) library into full-scan gas chromatography – mass spectrometry (GC–MS) data, using the library as a bait, to quantify metabolites (met) and thus performing a library-driven compound profiling. **Baitmet** can quantify compounds with (i) multivariate methods and without any prior information about the selective masses or (ii) by the integration of a previously defined selective mass for each compound. Also, internal standards (IS) for RT standardization are not needed in each sample, instead, only a single separated analysis of the IS is needed. **Baitmet** automatically determines which is the instrumental retention time variation of each samples with respect to a fixed retention index/retention time curve. **Baitmet** is however, also compatible with the use of internal standards, using them to compute the RI. **Baitmet** outputs a table with compounds name, spectral matching score, RI error, and the peak intensity or integrated area - relative concentration - of the compound in each sample.

2 Importing and customizing mass spectral libraries: using the Golm Metabolome Database

Baitmet comes with the free and downloadable version of the MassBank repository containing a set of ~500 EI GC-TOF mass spectra. To use it simply execute:

```
data(mslib)
```

Users may import their own mass spectral libraries. **Baitmet** is recommended to be used with the Golm Metabolome Database (GMD). To use the **GMD**, first, we have to download it from its [webpage](http://gmd.mpimp-golm.mpg.de/download/)¹, by downloading the file "GMD_20111121_VAR5_ALK_MSP.txt" or "GMD_20111121_MDN35_ALK_MSP.txt", depending on which type of chromatographic columns (VAR5 or MDN35) are we using. Then, we can load the library with the function `importGMD()`:

```
g.info <- "
Golm Metabolome Database
-----
Kopka, J., Schauer, N., Krueger, S., Birkemeyer, C., Usadel, B., Bergmuller, E., Dorman, P., Weckwerth, W., Gibon, Y., Stitt, M., Willmitzer, L., Fernie, A.R. and Steinhauser, D. (2005) GMD.CSB.DB: the Golm Metabolome Database, Bioinformatics, 21, 1635-1638."
golm.database <- importGMD(filename="GMD_20111121_VAR5_ALK_MSP.txt", DB.name="GMD", DB.version="GMD_20111121", DB.info=g.info, type="VAR5.ALK")
# The library in R format can now be stored for a posterior faster loading
save(golm.database, file="golmdatabase.rda")
```

Even if using FAMEs, we can download and use the ALK version of the GMD. The ALK version is recommended as it contains more RI than the FAME version. Baitmet operates with relative retention indexes, then, both FAME and ALK RI may be used indistinctly. The critical step is to download and use the correct type of chromatographic column (VAR5 or MDN35).

We can now select only a subset of the library with the function `subSetLib()`:

```
# Create a object id.list containing the identification list
load("golmdatabase.rda")
# Select those with KEGG number:
kegg.ind <- which(lapply(golm.database@database, function(x) x$KEGG)!="")
```

¹<http://gmd.mpimp-golm.mpg.de/download/>

```

golm.kegg <- subSetLib(database = golm.database, indexes = kegg.ind)
# We can also add the FAME into the library by:
db.names <- unlist(lapply(golm.database@database, function(x) x$Name))
fame.ind <- grep("FAME", db.names, ignore.case = TRUE)
golm.kegg.fames <- subSetLib(database = golm.database, indexes = unique(c(kegg.ind,
fame.ind)))

```

Finally, we can modify and customize the database:

```

# We can find a certain compound by:
findComp(name = "phenol", id.database = golm.kegg.fames)
  DB.Id      Compound Name CAS      Formula
1    13      Phenol (1TMS)  NA
2   181 Phenol, 2-amino- (2TMS) NA C12H23NOSi2
3   263 Phenol, 2-amino- (3TMS) NA C15H31NOSi3
# and access to its information (DB.Id=13):
golm.kegg.fames@database[[13]]$Name
"Phenol (1TMS)"
# or modify (for example) its selective masses:
golm.kegg.fames@database[[13]]$SelMZ <- c(120,154)
# To see all the slots available, execute:
str(golm.kegg.fames@database[[13]],1)

```

Baitmet uses by default in all its functions the library stored in the *mslib*. If we want to use Baitmet functions with another library, we have two options: i) to set the new library (in this case *golm.kegg.fames*) in all the functions that require it, for example:

```

findComp(name = "phenol", id.database = golm.kegg.fames)
  DB.Id      Compound Name CAS      Formula
1    13      Phenol (1TMS)  NA
2   181 Phenol, 2-amino- (2TMS) NA C12H23NOSi2
3   263 Phenol, 2-amino- (3TMS) NA C15H31NOSi3

```

or ii) to substitute the default Baitmet database object *mslib*, for our custom database, by the following code:

```

mslib <- golm.kegg.fames
# and then:
findComp(name = "phenol")
  DB.Id      Compound Name CAS      Formula
1    13      Phenol (1TMS)  NA
2   181 Phenol, 2-amino- (2TMS) NA C12H23NOSi2
3   263 Phenol, 2-amino- (3TMS) NA C15H31NOSi3

```

This allows executing all the functions without the need of always setting the library parameter. For the rest of the tutorial though, we will always declare the library, despite being not necessary.

3 GC-MS Data Processing with Baitmet: a tutorial

In this section we show the processing of pure standards samples analyzed through GC-MS. This tutorial shows how to deconvolve, align and identify the compounds contained in these four samples.

All the listed commands (script) to reproduce the following demo can be found by executing:

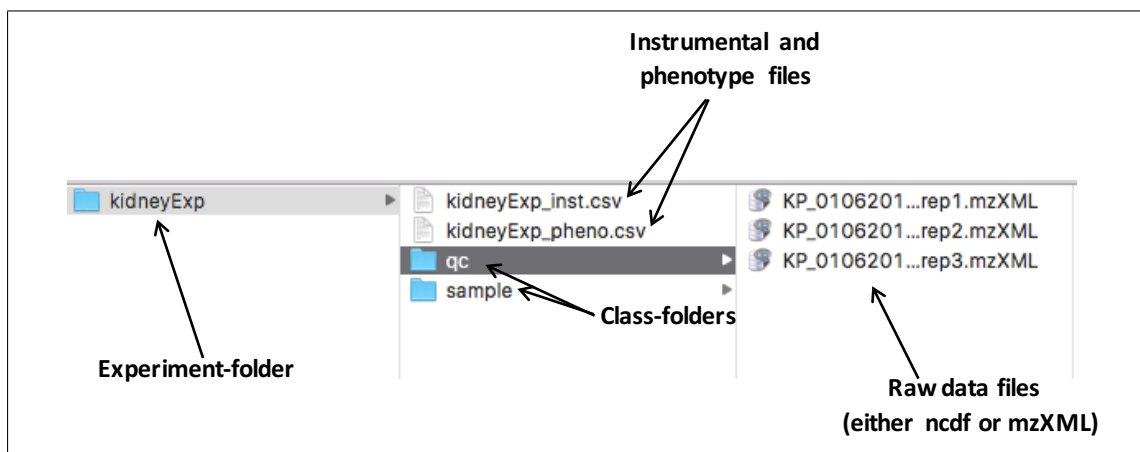


Figure 1: Distribution of the raw data files and the class and experiment folders for the given example.

```
help(package="baitmet")
```

and then click on *User guides, package vignettes and other documentation* and on *source* from the 'Baitmet Manual'.

3.1 Compound profiling: data processing

3.1.1 Setting up the experiment files

The experiment has to be organized as follows: all the samples related to each class have to be stored in the same folder (one folder = one class), and all the class-folders in one folder, which is the so-called *experiment folder*. **Baitmet** also accepts only one class; in that case, only one class-folder has to be created inside an experiment-folder. As an illustrative example, Figure 1 shows the disposition of the files in an example case where we aim to process some samples divided into two classes: *qc* and *sample*. In this example, the experiment folder is the 'kidneyExp' folder, which contains two class-folders called 'qc' and 'sample'.

For the rest of this tutorial, we will use instead a set of four pure standards chromatograms, which form a single class called *Std* in an *experiment folder* called *DEMO*. The following code will automatically create a folder 'DEMO' and a subfolder 'Std' in the current R working directory and download the raw data from a GitHub repository:

```
# Create the directory:
dir.create("DEMO/Std", recursive=T)
# Download raw data
download.file("https://github.com/xdomingoal/baitmet/raw/master/
131114aMRsa04_1.rdata", "DEMO/Std/131114aMRsa04_1.rdata")
download.file("https://github.com/xdomingoal/baitmet/raw/master/
131114aMRsa06_1.rdata", "DEMO/Std/131114aMRsa06_1.rdata")
download.file("https://github.com/xdomingoal/baitmet/raw/master/
131114aMRsa11_1.rdata", "DEMO/Std/131114aMRsa11_1.rdata")
download.file("https://github.com/xdomingoal/baitmet/raw/master/
131114aMRsa12_1.rdata", "DEMO/Std/131114aMRsa12_1.rdata")
```

To create a new experiment we have to create first a .csv type file containing the name of the

raw data files to process. The raw data files have to be in the same directory as the instrumental file. **Baitmet** also admits a phenotypic table which contains the classes of the samples. The instrumental data file is always needed but the phenotype file is optional. The instrumental table can have as many columns as desired, but it has to contain at least two columns named 'sampleID' and 'filename'. The same is applicable to the phenotypic table, in this case the two necessary columns are 'sampleID' and 'class'. Please note that capital letters of the column names must be respected and that 'sampleID' is the column that relates the instrumental and phenotypic tables. These files can also be created automatically by executing the following code:

```
createdt("DEMO")
```

where DEMO is the *experiment path*, corresponding to the folder 'DEMO' in the current working directory. The *experiment path* is the path where the experiment-folder is, and DEMO is the experiment-folder. Two things have to be considered at this step: .csv files are different when created by American and European computers, so errors may arise due to that fact. Also, the folder containing the samples (in this case, the folder 'DEMO', must contain only folders. If the folder 'DEMO' contains files (for example, an already created .csv file), **Baitmet** will prompt an error.

3.1.2 Data processing

We load the new experiment to the R workspace using the function 'newExp', where we introduce the path of the .csv file containing the instrumental data and the phenotypic data, along with a description of the experiment. We name the new experiment as 'ex'. With **metaData** and **phenoData** we can retrieve the instrumental data and the experiment classes:

```
ex <- newExp(instrumental="DEMO/DEMO_inst.csv", phenotype="DEMO/DEMO_pheno.csv")
# Accessing metadata:
metaData(ex)
      sampleID      filename      date      time
1 131114aMRsa04_1 Std/131114aMRsa04_1.rdata 2016-07-11 13:43:40
2 131114aMRsa06_1 Std/131114aMRsa06_1.rdata 2016-07-11 13:40:48
3 131114aMRsa11_1 Std/131114aMRsa11_1.rdata 2016-07-11 13:40:56
4 131114aMRsa12_1 Std/131114aMRsa12_1.rdata 2016-07-11 13:41:06
# Accessing phenodata:
phenoData(ex)
Experiment containing 4 samples in 1 different type of classes named: Std.

sampleID      class
1 131114aMRsa04_1 Std
2 131114aMRsa06_1 Std
3 131114aMRsa11_1 Std
4 131114aMRsa12_1 Std
```

Next, we create the chromatographic method by the function **setChrmMethod**, where we input the retention times and indexes of our references. In the given example dataset, 13 FAME are co-injected with the samples. The RI of those FAME are known, and we have manually measured their retention times. Then, we can setup the chromatographic method for this example by:

```
Chrm.STD <- setChrmMethod(rt=c(4.415, 5.145, 5.836, 7.11, 8.26, 9.30, 10.263,
11.14, 11.94, 12.691, 13.455, 14.485, 15.968), ri=c(1120.62, 1225.27, 1326.95,
1526.31, 1729.57, 1928.52, 2131.7, 2342.06, 2548.56, 2739.86, 2941.17, 3140.52,
3343.88), name="Chrm STD")
```

Next, compounds are detected with `decBaitmet()` function ². This function needs a 'Deconvolution parameters' object, that can be created with `setBaitPar()` function, containing the parameters of the algorithm as shown as follows:

```
ext.par <- setBaitPar(ri.error = 0.05, min.peak.width = 1, min.peak.height = 1000,
noise.threshold = 100, avoid.processing.mz = c(1:69,73:75,147:149))
ex <- decBaitmet(Experiment = ex, BaitParameters = ext.par, ms.library = mslib,
chrom.method = Chrm.STD)
Searching metabolites in Std/131114aMRsa04_1.rdata ... Processing 1 / 4
|=====| 100%
Searching metabolites in Std/131114aMRsa06_1.rdata ... Processing 2 / 4
|=====| 100%
Searching metabolites in Std/131114aMRsa11_1.rdata ... Processing 3 / 4
|=====| 100%
Searching metabolites in Std/131114aMRsa12_1.rdata ... Processing 4 / 4
|=====| 100%
Grouping metabolites across samples...

Computing spectral match scores...
```

Done!

The most important parameter is the retention index error (`ri.error`) in which compounds are going to be searched. A value of 0.05 corresponds to a 5 percent.

Now, we can access to the identification list, alignment list and final list respectively by `idList()` (identification results), `alignList()` (relative quantification results) and `dataList()` (both identification and quantification results). For example:

```
head(idList(object = ex, id.database = mslib ))
```

AlignID	tmean	FoundIn	Name.1	MatchFactor.1
1	5	4.042	4 Acetoacetic acid (1MEOX) (1TMS) MP	77.28
2	10	4.043	4 Butanoic acid, 2-oxo- (1MEOX) (1TMS) MP	48.51
3	4	4.044	4 Acetoacetic acid (1MEOX) (1TMS) BP	90.96
4	11	4.047	4 Isovaleric acid, 2-oxo- (1MEOX) (1TMS) MP	95.63
5	23	4.047	4 Isovaleric acid, 2-oxo- (1MEOX) (1TMS) BP	79.84
6	1	4.069	3 Glycolic acid (2TMS)	83.42

For more details on how display **Baitmet** results can be found in section 4 Results and visualization.

Data can be saved and loaded at any stage of the process by:

```
save(ex, file="DEMO_baitmet.rda")
load("DEMO_baitmet.rda")
```

3.2 Computing retention indexes

3.2.1 Withouth using internal standards

In large datasets, RI/RT curve calculated using the calibration file containing RI standards (representative of the chromatographic method), might suffer variation due to instrumental error. To evaluate these variations, and automatically determine the empirical compounds RI by using the compounds found in the samples as natural reference, use:

²If when executing `decBaitmet()` function an error of the type: "Error Reading from Connection" appears, that means that data has not been downloaded correctly. Please, download it again

```
ex <- computeRI(Experiment = ex, ms.library = mslib)
```

Now, if we access to the identification list by `idList()` function, the table will be updated with a RI error, in %. For more details, please see the original **Baitmet** study.

3.2.2 Using internal standards

Alternatively, **Baitmet** is also compatible with the use of FAME or ALK, or any other compound which the user may consider as a reference. Let us first illustrate the steps to follow for an user that has co-injected FAME with the samples, as is the case of the given example. Once the samples are processed, users may access to the compounds list through `idList()` function. The user has to localize all the FAME in the list. To do it automatically, execute the following lines:

```
# Create a object id.list containing the identification list
id.list <- idList(object = ex, id.database = mslib)
# Select their names
id.names <- id.list$Name.1
# Search and select only those names containing the word FAME
fame.indexes <- grep("FAME", id.names, ignore.case = TRUE)
id.list[fame.indexes,]
AlignID tmean FoundIn Name.1 MatchFactor.1
349 4.418 4 Octanoic acid methyl ester (FAME MIX) 99.42
350 5.153 4 Nonanoic acid methyl ester (FAME MIX) 98.97
351 5.850 4 Decanoic acid, methyl ester (FAME MIX) 98.87
352 7.121 4 Dodecanoic acid methyl ester (FAME MIX) 98.5
353 8.271 4 Tetradecanoic acid methyl ester (FAME MIX) 98.73
354 9.316 4 Hexadecanoic acid methyl ester (FAME MIX) 99.2
355 10.275 4 Octadecanoic acid methyl ester (FAME MIX) 98.79
356 11.152 4 Eicosanoic acid methyl ester (FAME MIX) 98.7
357 11.960 4 Docosanoic acid methyl ester (FAME MIX) 99.69
358 12.710 4 Tetracosanoic acid methyl ester (FAME MIX) 99.27
359 13.477 4 Hexacosanoic acid methyl ester (FAME MIX) 99.16
360 14.506 4 Octacosanoic acid methyl ester (FAME MIX) 98.76
361 15.990 4 Triacontanoic acid methyl ester (FAME MIX) 98.02
```

To use those FAME as internal reference, the user has to introduce their AlignID to the function `computeRI()`, therefore:

```
FAME.AlignID <- as.numeric(as.vector(id.list[fame.indexes, "AlignID"]))
ex <- computeRI(Experiment = ex, ms.library = mslib, IS.alignid = FAME.AlignID)
```

Now, if we access to the identification list by `idList()` function, the table will be updated with a RI error, in %.

In fact, the user may select other compounds to be used as reference. If the user is confident of the identity of a set of metabolites (e.g., urea, glycerol, myo-inositol), the user may use a set of them to compute the RI, by introducing their AlignID into the `computeRI()` function. However, this should be use at own risk or if the user has a good background on chromatography, as those metabolites selected should elute along all the chromatogram (as FAME or ALK are), and their identity should be priorly confirmed.

3.3 Validating results: using selective masses for compound quantification

The user may confirm the quantitative results provided by **Baitmet** by the quantification of selective masses of some (or all) compounds. For example, we want to quantify some m/z from Benzoic acid (AlignID 38) and Fumaric acid (AlignID 61)³. The function `quantSM` will first see if those compounds have their most selective masses defined in the library selected, if not, the function will take the `mzN` (parameter in `quantSM`) most intense masses of the empirical spectra. By default, the function selects the 5 most intense masses of the compound (`mzN=5`).

```
ex <- quantSM(Experiment = ex, ms.library = mslib, AlignID = c(38,61))
```

and we can access to the results by:

```
mzList(Experiment = ex, by.area = TRUE)
AlignID MZ    RT 131114aMRsa04_1 131114aMRsa06_1 131114aMRsa11_1 131114aMRsa12_1
1      38 122 5.349      61255151      56364467      51502905      54833166
2      38  76 5.347      365098      343833      313597      344531
3      38  91 5.349      4337608      4177261      3689513      3940886
4      38 105 5.349      60301812      55618941      50945494      54151536
5      38  77 5.349      980967      952414      860949      919944
6      61 245 6.018      7656873      7661698      6903457      7188981
7      61  83 6.018      9186852      8713769      8099637      8686076
8      61 143 6.018      29964360      27890251      26534381      28433705
9      61 133 6.018      6094245      5690635      5403206      5785183
10     61 246 6.018      15830972      15093192      13977989      15037326
```

We can visualize the extracted masses by the `plotMZ()` function, as explained in Section 4.

4 Results and visualization

We can access to the identification list, alignment list and final list by `idList()`, `alignList()` and `dataList()` respectively. From the `idList(ex)`, we see that Fumaric acid is appearing at minute 6.01 with an AlignID number #61. Let us have a look to its profile with the function `plotProfile()`, which displays Figure 2.

Its spectra can be also be plotted and compared with the reference spectra using the function `plotSpectra()` which displays Figure 3:

The `plotSpectra()` function has a lot of possibilities for plotting, to know more access to its particular help by:

```
?plotSpectra
```

Alternatively, if we have quantified the selective masses with the `quantSM()` function, we can visually those extracted masses by `plotMZ()`, which displays Figure 4.

Users may export their spectra to MSP format or CEF format for comparison with NIST MS Search software (MSP), or to compare spectra with NIST through the MassHunter workstation (CEF). Users are referred to `exportMSP` and `exportCEF` functions help for more details.

³The AlignID is a dynamic variable that changes from one to another experiment. This means that if the user has reproduced this DEMO exactly with the same parameters, the AlignID should coincide, but the use of other parameters will lead to another AlignID number for each metabolite.

```
plotProfile(Experiment = ex, AlignId = 61)
```

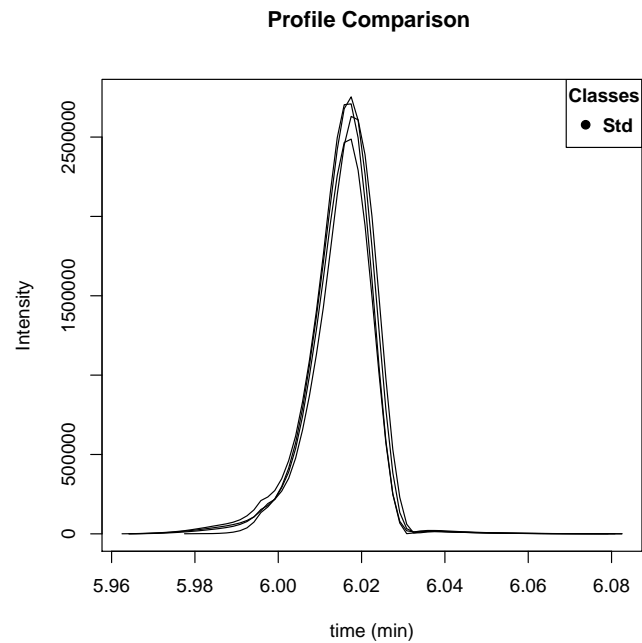


Figure 2: Image from `plotProfile(ex,61)`.

```
plotSpectra(Experiment = ex, AlignId = 61, id.database = mslib)
```

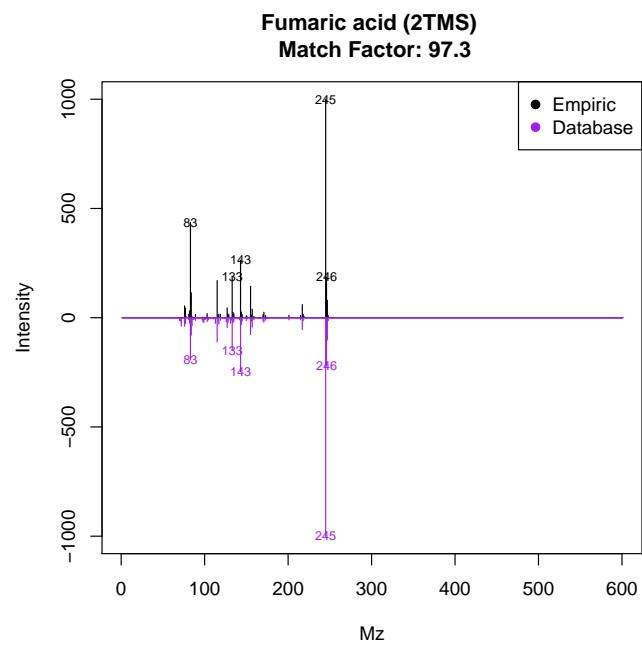


Figure 3: Image from `plotSpectra(ex,61)`.

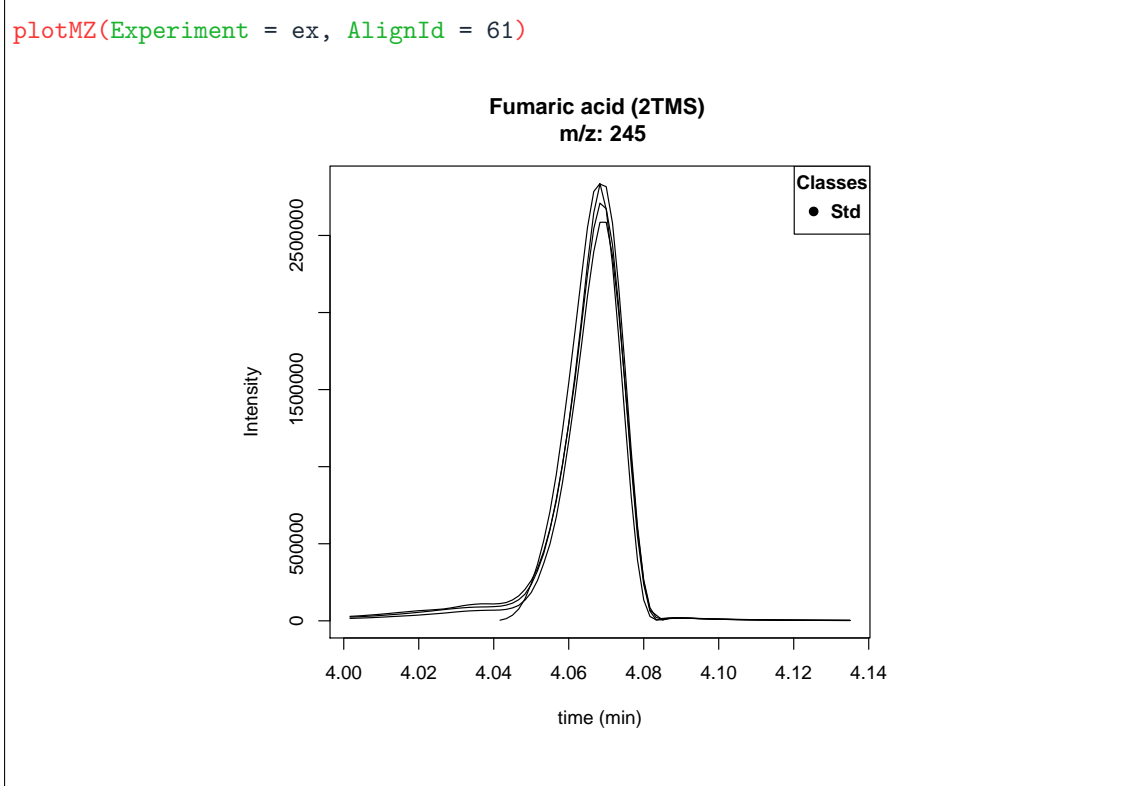


Figure 4: Image from plotMZ(ex,61).